

GET THE \$0 CO-PAY*



Otezla[®]
(apremilast) 30mg
tablets

show *more* of you

Your guide to getting started on Otezla

little show

big day

Otezla is a prescription medicine approved for the treatment of adult patients with moderate to severe plaque psoriasis for whom phototherapy or systemic therapy is appropriate.

SELECTED SAFETY INFORMATION

Do not take Otezla if you are allergic to apremilast or to any of the ingredients in Otezla.

Please see Important Safety Information on page 13.

*Certain restrictions apply.

1-844-4OTEZLA | [otezla.com/copay](https://www.otezla.com/copay)



What's *inside*:

Benefits of Otezla	3
Getting started	
Taking Otezla	4
Otezla delivery	
Getting Otezla from a specialty pharmacy	5
Moderate to severe plaque psoriasis	
Proven results	6
Moderate to severe scalp psoriasis	7
Side effects of Otezla in plaque psoriasis.....	8
Sarah's story	9
Why Otezla is different	10
Support and more	
Learn about the Otezla SupportPlus™ program.....	11
Savings and cost support	12
GOtezla® app.....	12
Important Safety Information	13



Questions?



Otezla SupportPlus™ can help

One of our team members can answer your questions and help you find savings.
Just call 1-844-4OTEZLA (1-844-468-3952)
from 8 AM – 8 PM ET, Monday – Friday.



Benefits of Otezla

Otezla is a pill that treats **moderate to severe plaque psoriasis** differently. Here are a few of the benefits of Otezla. Keep in mind that each person responds differently when taking Otezla.



75% clearer skin is achievable, with **reduced redness, thickness, and scaliness** of plaques after just 4 months of treatment

Otezla is also proven to help with **moderate to severe scalp psoriasis**



Otezla works **inside the body** to help reduce inflammation



Otezla is a pill—**not an injection or messy cream**



The Otezla Prescribing Information has **no requirement for blood testing**



Otezla is the #1 prescribed branded *pill* for *plaque psoriasis**

Curious about side effects or when you may expect results?

Watch videos all about getting started with Otezla at otezla.com/start



Side effects of Otezla

The **most common side effects of Otezla** in plaque psoriasis were diarrhea, nausea, upper respiratory tract infection, tension headache, and headache.

*Source: Symphony Health Solutions PrescriberSource PatientFocus data, Amgen proprietary methodology. Nov2019-Jan2020. Data include only oral formulations for scripts tagged with a plaque psoriasis indication.



Taking Otezla

Otezla is a pill taken by mouth every day—once in the morning, and once at night. You can take Otezla **with or without food**. But it's important not to crush, split, or chew the pill.

Staying consistent with treatment

It's important to **take Otezla** every day **exactly as prescribed**. Do not skip doses or discontinue treatment without consulting your doctor.

Talk to your doctor if you experience any side effects.

Helpful tip

It might help you to remember to take Otezla with breakfast and dinner each day, or after you brush your teeth in the morning and at night.

Your first week

On your first day, you only take one pill. For people with severe kidney disease, the Otezla dose is one pill a day.

When you open up your starter pack, you'll see you have a 5-day titration period, which means that you'll gradually increase your dose over your first 5 days, until you reach the recommended dose. People with severe kidney disease will follow a different schedule for their titration period. **Be sure to take Otezla as directed by your doctor.**

	Day 1	Day 2	Day 3	Day 4	Day 5	Day 6 & beyond
AM	10 mg	10 mg	10 mg	20 mg	20 mg	30 mg
PM	–	10 mg	20 mg	20 mg	30 mg	30 mg

This titration period is meant to help reduce the gastrointestinal symptoms related to initial treatment with Otezla.

Selected Safety Information

Otezla can cause severe diarrhea, nausea, and vomiting, especially within the first few weeks of treatment. Use in elderly patients and the use of certain medications with Otezla appears to increase the risk of having diarrhea, nausea, or vomiting. Tell your doctor if any of these conditions occur.

Please see Important Safety Information on page 13.



Otezla[®]
(apremilast) 30mg tablets

otezla.com

Getting Otezla from a *specialty pharmacy*

Otezla is delivered to you by a specialty pharmacy. That means there's no need to pick up your medication—it's brought right to your door.

Keep reading to learn more about the process of getting your Otezla prescription from a specialty pharmacy.



First, your doctor will send your prescription to a specialty pharmacy. Ask your doctor's office for your specialty pharmacy's information.



Then, the specialty pharmacy will call you to set up delivery. If you don't hear from your specialty pharmacy within a week after being prescribed Otezla, talk to your doctor or call Otezla SupportPlus™ at **1-844-4OTEZLA** (1-844-468-3952).



Lastly, your Otezla prescription will be delivered to your doorstep. Once your specialty pharmacy receives approval from your insurance company, they will fill the prescription and send it directly to you. Success!



Watch a video to learn more about working with a specialty pharmacy

Visit otezla.com/specialty-pharmacy to get the scoop.

Questions about insurance approval?
See page 12 for savings and coverage options.



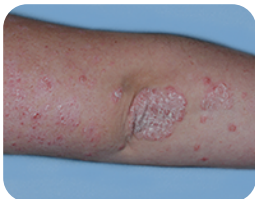
Otezla[®]
(apremilast) 30mg tablets

otezla.com



Proven *results* in plaque psoriasis

BEFORE OTEZLA



WITH OTEZLA AT 16 WEEKS



BEFORE OTEZLA



WITH OTEZLA AT 16 WEEKS



Actual Otezla patients. Not everyone responds to Otezla, and those who do respond may respond differently.

See more before and after photos at [otezla.com/images](https://www.otezla.com/images)

Wondering when you may expect results? Clearer skin is achievable after just 4 months on Otezla.

Watch a video to learn more about what to expect from your Otezla treatment at [otezla.com/results-video](https://www.otezla.com/results-video)



Clearer skin is possible with Otezla



Studies showed that after just 4 months on Otezla, **75% clearer skin** is achievable, with reduced redness, thickness, and scaliness of plaques.



"After taking Otezla for 4 months, I noticed the psoriasis minimizing on my arms and legs. After a while, it was much less noticeable on my face."

-Eddie, Otezla patient since 2016

Common side effects of Otezla

The most common side effects of Otezla were diarrhea, nausea, upper respiratory tract infection, tension headache, and headache.

Selected Safety Information

Otezla is associated with an increase in depression. In clinical studies, some patients reported depression and suicidal behavior while taking Otezla. Some patients stopped taking Otezla due to depression. Before starting Otezla, tell your doctor if you have had feelings of depression or suicidal thoughts or behavior. Be sure to tell your doctor if any of these symptoms or other mood changes develop or worsen during treatment with Otezla.



Otezla[®]
(apremilast) 30mg tablets

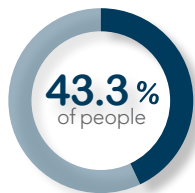
[otezla.com](https://www.otezla.com)

Proven *results* in scalp psoriasis

Otezla is also proven to treat **moderate to severe scalp psoriasis**. The scalp is one of the most commonly affected areas of plaque psoriasis.

Otezla is proven to help get clearer skin on your scalp

In a clinical trial, 201 people taking Otezla were compared to 102 people taking a placebo (sugar pill).



In a clinical study, **43.3% of people taking Otezla** saw an improvement in their scalp psoriasis after just 4 months of treatment, as compared to 13.7% taking placebo.

Otezla is also proven to help improve both scalp and whole body itch

47.1%
of people

47.1% of people taking Otezla saw a reduction in scalp itch after just 4 months, as compared to 21.1% taking placebo.

45.5%
of people

45.5% of people taking Otezla saw a reduction in whole body itch after just 4 months, as compared to 22.5% taking placebo.

BEFORE OTEZLA



WITH OTEZLA AT 16 WEEKS



Actual clinical trial patient. Not everyone responds to Otezla, and those who do respond may respond differently.



"After four months of taking Otezla, my skin had improved. I now have elbows and a scalp that are clearer."

-Sarah, Otezla patient since 2018

Common side effects of Otezla

The most common side effects of Otezla that occurred in the scalp psoriasis study were diarrhea, nausea, headache, and vomiting.

See page 8 for more information.

Selected Safety Information

Some patients taking Otezla lost body weight. Your doctor should monitor your weight regularly. If unexplained or significant weight loss occurs, your doctor will decide if you should continue taking Otezla.



Otezla[®]
(apremilast) 30mg tablets

otezla.com

Side effects of Otezla in plaque psoriasis

Otezla *in* clinical studies

Otezla clinical studies involved 1,426 adults with moderate to severe plaque psoriasis who were candidates for phototherapy or systemic therapy.

In each study, some people took 30 mg of Otezla twice daily, and others took a placebo (sugar pill).

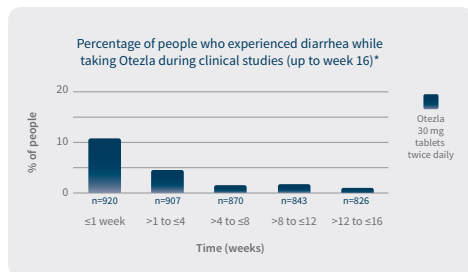
Side effects

The table below shows the most common side effects reported by people taking Otezla compared to those reported by people taking a placebo (sugar pill).

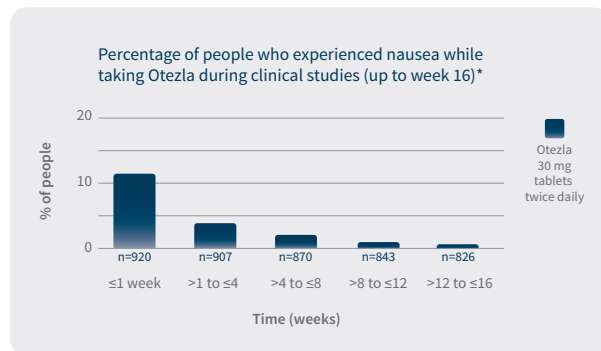
Most common side effects (up to week 16)	Otezla (920 people)	Placebo (506 people)
Diarrhea	17% of patients	6% of patients
Nausea	17%	7%
Upper respiratory tract infection	9%	6%
Tension headache	8%	4%
Headache	6%	4%

Most common gastrointestinal side effects over time

In most people, the side effects of diarrhea and nausea occurred within the first 2 weeks of treatment and tended to go away over time without stopping Otezla. In some cases, patients with severe diarrhea or nausea were hospitalized. Tell your doctor if any side effects occur.



Most common gastrointestinal side effects over time (continued)



*These studies involved 920 adults with moderate to severe plaque psoriasis who initially received Otezla 30 mg twice daily.

*"n" represents the number of people participating in the studies during the given week(s).

Common side effects of Otezla in scalp psoriasis

A separate Otezla clinical study involved adults with moderate to severe scalp psoriasis.

Most common side effects (up to week 16)	Otezla (200 people)	Placebo (102 people)
Diarrhea	31% of patients	11% of patients
Nausea	22%	6%
Headache	12%	5%
Vomiting	6%	2%

Sarah's story: *"I'm grateful to be on an oral therapy that works for me."*

Being in the great outdoors is where Sarah feels most at peace with herself and with the world around her. But when plaque psoriasis entered the picture, appearing on her skin and scalp (and bringing redness, flaking, and scaliness with it), going outside was the last thing she wanted to do. Instead, she stayed inside and hid her skin from the world. Initially, her dermatologist prescribed topical shampoos and creams, but they didn't give her the results she desired.

Why she chose Otezla

Frustrated with her treatment options, Sarah decided to get a second opinion. Her new dermatologist had this to say: "Let's try something different—not a cream."

Sarah's dermatologist recommended Otezla, and after a conversation about side effects and results, she began taking the starter pack.

At 4 months, her skin had improved. She now has elbows and a scalp that are clearer. She's able to be back in the great outdoors, feeling better in her own skin.



Hear from more people taking Otezla at [OtezlaStories.com](https://www.otezla.com/stories)



Otezla[®]
(apremilast) 30mg
tablets

[otezla.com](https://www.otezla.com)

"I feel better knowing that I have a treatment that is working for me."

—SARAH
Otezla patient since 2018

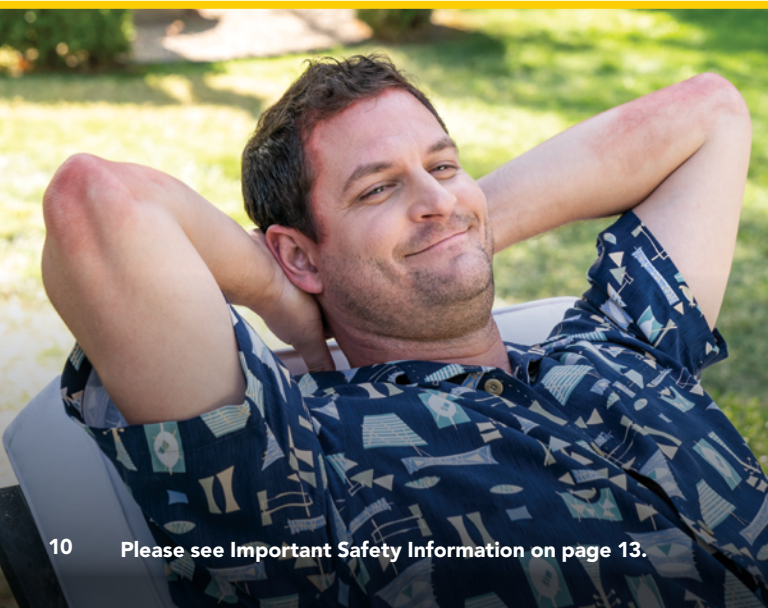


Please see Important Safety Information on page 13.

Otezla is a pill that works *differently*

While the exact way Otezla works isn't completely understood, here's what we do know:

- Otezla works **inside the body** to treat plaque psoriasis
- Specifically, Otezla reduces **PDE4**, an enzyme located inside cells that causes inflammation
- A reduction in PDE4 activity is thought to reduce **overactive inflammation**
- Less inflammation can lead to a reduction in plaque psoriasis symptoms



“Otezla works from the inside to reduce inflammation.”

—**DR. ERIN BOH**, board certified dermatologist



Go to [otezla.com/learn](https://www.otezla.com/learn) to hear more from Dr. Boh.



Watch a video to get a closer look at how Otezla works to treat moderate to severe plaque psoriasis at [otezla.com/works](https://www.otezla.com/works)

Selected Safety Information

Some medicines may make Otezla less effective, and should not be taken with Otezla. Tell your doctor about all the medicines you take, including prescription and nonprescription medicines.

Tell your doctor if you are pregnant, planning to become pregnant or planning to breastfeed. Otezla has not been studied in pregnant women or in women who are breastfeeding.

The Otezla SupportPlus™ program



Otezla SupportPlus is a free program designed to help you get started and stay on track with Otezla.



Insurance assistance—we'll work with your insurance company on coverage for Otezla



Help paying for treatment with the **\$0 co-pay card***



24/7 **nurse support**



Free resources, like the **GOtezla® app** with daily treatment reminders

*Certain restrictions apply; eligibility not based on income, must be 18 years or older. This offer is not valid for persons eligible for reimbursement of this product, in whole or in part under Medicaid, Medicare, or similar state or federal programs. Offer not valid for cash-paying patients. People who are not eligible can call 1-844-4OTEZLA to discuss other financial assistance opportunities.



Otezla[®]
(apremilast) 30mg tablets

otezla.com

3 easy ways to *sign up*

Enrolling in SupportPlus is easy, and the services are free for everyone who signs up. Here's how to join:

- **Go to otezla.com/supportplus**
- Call **1-844-4OTEZLA** (1-844-468-3952)
- Ask your doctor to sign you up when he or she prescribes Otezla



Please see Important Safety Information on page 13.

Savings and cost support for Otezla

Most people with private insurance pay nothing out of pocket for their prescription. Now that you've been prescribed, you have the same opportunity to save.



Get the \$0 co-pay offer 3 different ways:

- Go to otezla.com/copay
- Call **1-844-4OTEZLA** (1-844-468-3952)
- Ask your doctor about the \$0 co-pay* card

We've got you covered

Getting your medication shouldn't be difficult. If you have private insurance and are experiencing delays, or if your private insurance doesn't cover Otezla, you may be eligible for **free medication** through the **Otezla Bridge Program**.†

If you have government-issued insurance (Medicare or Medicaid) or are uninsured/underinsured, you may be eligible for the **Patient Assistance Program**.



For all Otezla savings questions:
Call **1-844-4OTEZLA** (1-844-468-3952)

*Certain restrictions apply; eligibility not based on income.

†To receive a free bridge supply of Otezla; you must have an on-label diagnosis and be denied or experiencing a delay in obtaining coverage. Federal, State, or similar insurance plans are not eligible for Bridge. Once Otezla is approved by your commercial insurance plan, you will no longer be eligible for the Bridge Program.



Otezla[®]
(apremilast) 30mg
tablets

otezla.com



Download **GOtezla**[®]

The GOtezla app has medication reminders, tools to track your progress, and tips on what to expect during treatment—and you can download it for free.



Download
the app here



IMPORTANT SAFETY INFORMATION

Do not take Otezla if you are allergic to apremilast or to any of the ingredients in Otezla.

Otezla can cause severe diarrhea, nausea, and vomiting, especially within the first few weeks of treatment. Use in elderly patients and the use of certain medications with Otezla appears to increase the risk of having diarrhea, nausea, or vomiting. Tell your doctor if any of these conditions occur.

Otezla is associated with an increase in depression. In clinical studies, some patients reported depression and suicidal behavior while taking Otezla. Some patients stopped taking Otezla due to depression. Before starting Otezla, tell your doctor if you have had feelings of depression or suicidal thoughts or behavior. Be sure to tell your doctor if any of these symptoms or other mood changes develop or worsen during treatment with Otezla.

Some patients taking Otezla lost body weight. Your doctor should monitor your weight regularly. If unexplained or significant weight loss occurs, your doctor will decide if you should continue taking Otezla.

Some medicines may make Otezla less effective, and should not be taken with Otezla. Tell your doctor about all the medicines you take, including prescription and nonprescription medicines.

Side effects of Otezla include diarrhea, nausea, vomiting, upper respiratory tract infection, tension headache, and headache. These are not all the possible side effects with Otezla. Ask your doctor about other potential side effects. Tell your doctor about any side effect that bothers you or does not go away.

Tell your doctor if you are pregnant, planning to become pregnant or planning to breastfeed. Otezla has not been studied in pregnant women or in women who are breastfeeding.

You are encouraged to report negative side effects of prescription drugs to the FDA. Visit www.fda.gov/medwatch, or call 1-800-332-1088.

[Please click here for Full Prescribing Information.](#)



Have questions or
need some help?
Give us a *call*.

Our team is available 8 AM – 8 PM ET,
Monday – Friday, at
1-844-4OTEZLA (1-844-468-3952).